

**TEST REPORT**

NUMBER : TWNH00010385

APPLICANT: ALLIS COMMUNICATIONS CO., LTD.  
10-3FI., NO. 31-1, LANE  
169, KANG NING ST., HSI CHIH CITY,  
TAIPEI 221, TAIWAN, R.O.C.

DATE : AUG 12, 2008

**SAMPLE DESCRIPTION:**

TWO (2) PIECES OF SUBMITTED SAMPLES SAID TO BE :

ITEM NAME : GPS ANTENNA  
ITEM NO. : M TYPE/ L TYPE  
QUANTITY : 2 PCS  
DATE SAMPLE RECEIVED : JUL 14, 2008  
DATE TEST STARTED : JUL 29, 2008

\*\*\*\*\*

**TESTS CONDUCTED:**

AS REQUESTED BY THE APPLICANT, FOR DETAILS PLEASE REFER TO ATTACHED PAGES.

\*\*\*\*\*

**CONCLUSION:**

TEST SAMPLE	STANDARD	RESULT
SUBMITTED SAMPLES	HIGH TEMPERATURE TEST	SEE TEST CONDUCTED
	- WITH REFERENCE TO IEC 60068-2-2 TEST Ba	
	HUMIDITY TEST	SEE TEST CONDUCTED
	- WITH REFERENCE TO IEC 60068-2-3 TESTS Ca	
	LOW TEMPERATURE TEST	SEE TEST CONDUCTED
	- WITH REFERENCE TO IEC 60068-2-1 TEST A	

\*\*\*\*\*

AUTHORIZED BY:  
ON BEHALF OF INTERTEK TESTING SERVICES  
TAIWAN LIMITED



PAUL YU  
DIRECTOR

Intertek Testing Services Taiwan Ltd.  
8F., No. 423, Ruiguang Rd., Neihu District, Taipei 114, Taiwan, R.O.C.

全國公證檢驗股份有限公司  
114台北市內湖區瑞光路423號8樓  
Tel: (+886-2) 6602-2888 · 2797-8885 Fax: (+886-2) 6602-2410

Attention is drawn to the terms and conditions printed overleaf.

TEST REPORT

NUMBER : TWNH00010385

CONCLUSION:

TEST SAMPLE

STANDARD

RESULT

HUMIDITY TEST

SEE TEST CONDUCTED

- WITH REFERENCE TO

IEC 60068-2-3 TESTS Ca

\*\*\*\*\*

AUTHORIZED BY:  
ON BEHALF OF INTERTEK TESTING SERVICES  
TAIWAN LIMITED



PAUL YU  
DIRECTOR

Intertek Testing Services Taiwan Ltd.  
8F., No. 423, Ruiguang Rd., Neihu District, Taipei 114, Taiwan, R.O.C.

全國公證檢驗股份有限公司  
114台北市內湖區瑞光路423號8樓  
Tel: (+886-2) 6602-2888 · 2797-8885 Fax: (+886-2) 6602-2410

Attention is drawn to the terms and conditions printed overleaf.

NUMBER: TWNH00010385

TESTS CONDUCTED

1. HIGH TEMPERATURE TEST

TESTED SAMPLE :

SAMPLE NO	ITEM NO
1	L TYPE
2	M TYPE

TEST EQUIPMENT:

EQUIPMENT : HIGH TEMPERATURE CHAMBER  
 MANUFACTURER : KSON  
 MODEL NUMBER : THS-D4S-100  
 DATE OF CALIBRATION : JAN. 21, 2008

LABORATORY AMBIANCE CONDITION:

TEMPERATURE : 18~28 °C  
 HUMIDITY : 20~80 %RH

REFERENCE DOCUMENT:

THE TEST WAS PERFORMED WITH REFERENCE TO IEC 60068-2-2 TEST Ba.

PERIPHERAL SETUP DIAGRAM:

- SAMPLE SIZE: 2 PCS
- SETUP PHOTO:



TEST CONDITION

- TEMPERATURE: 85 °C
- DURATION OF THE TEST: 16 HOUR
- NON OPERATING TEST

\*\*\*\*\*

NUMBER: TWNH00010385

TESTS CONDUCTED

1. HIGH TEMPERATURE TEST

**TEST PROCEDURE:**

- CHECK THE SAMPLES' APPEARANCE BEFORE TEST.
- PUT THE SAMPLES INTO CHAMBER AND SET UP TESTING CONDITION.
- AFTER TESTING, TAKE OUT SAMPLES FROM CHAMBER AND PUT THEM IN THE STORAGE AREA.
- CHECK THE TEMPERATURE RECORD.
- OBSERVE THE SAMPLES AND RECORD FOR ANY VISIBLE CHANGE AFTER TESTING.

**SUMMARY:**

- NO VISIBLE DAMAGE WAS FOUND.
  - FUNCTIONAL ELECTRICAL TEST IS PERFORMED BY THE APPLICANT AND CONSIDERED NORMAL ACCORDING TO THE APPLICANT'S REQUEST.
- SAMPLE 1: L TYPE: ANTENNA:



SAMPLE 2: M TYPE: ANTENNA:



\*\*\*\*\*

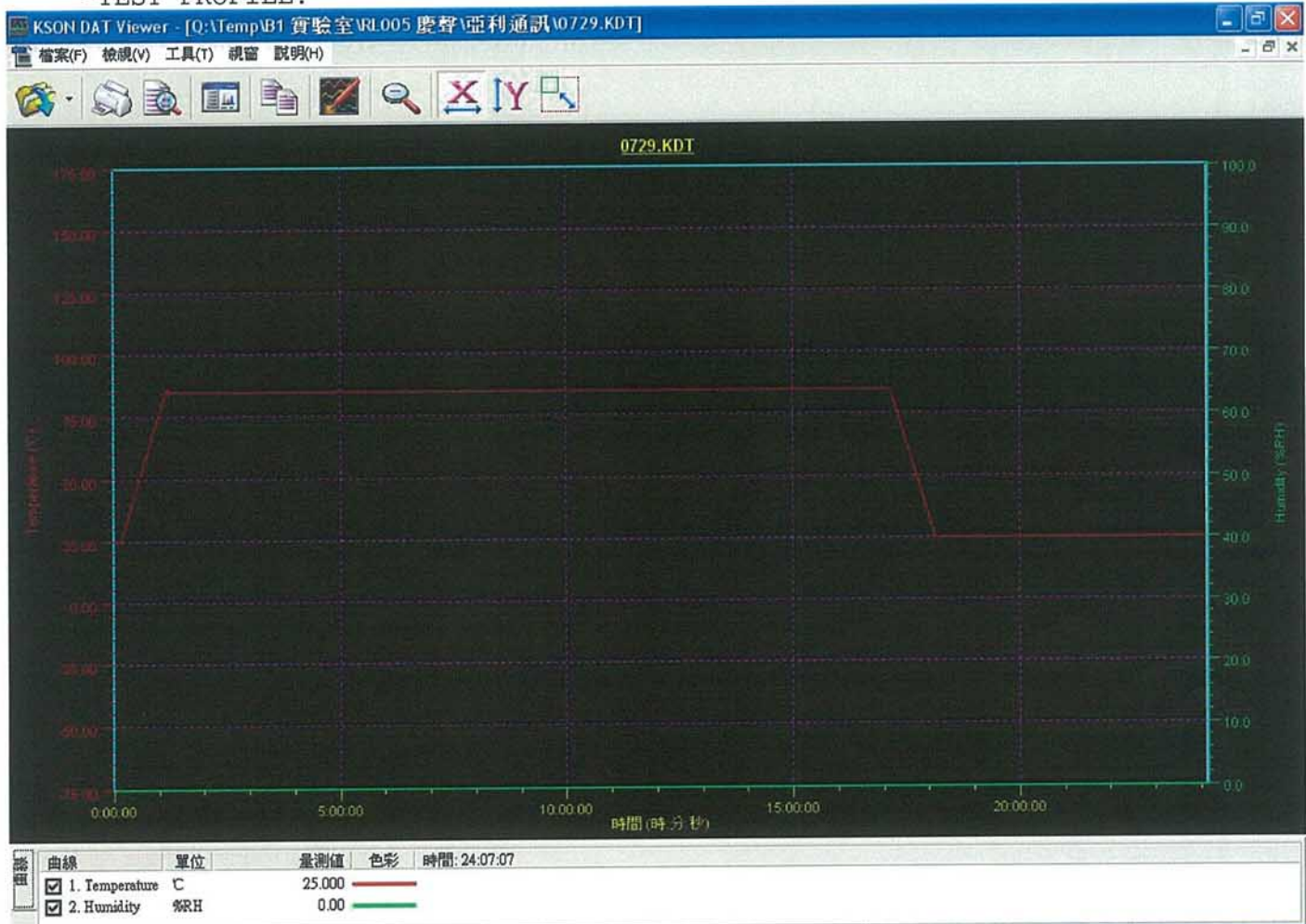


NUMBER: TWNH00010385

## TESTS CONDUCTED

### 1. HIGH TEMPERATURE TEST

#### -TEST PROFILE:



\*\*\*\*\*

NUMBER: TWNH00010385

## TESTS CONDUCTED

### 2. HUMIDITY TEST

#### TESTED SAMPLE :

SAMPLE NO	ITEM NO
1	L TYPE
2	M TYPE

#### TEST EQUIPMENT:

EQUIPMENT : TEMPERATURE & HUMIDITY CHAMBER  
MANUFACTURER : KSON  
MODEL NUMBER : THS-D4S-100  
DATE OF CALIBRATION : JAN. 21, 2008

#### LABORATORY AMBIANCE CONDITION:

TEMPERATURE : 18~28 °C  
HUMIDITY : 20~80 %RH

#### REFERENCE DOCUMENT:

-THE TEST WAS PERFORMED WITH REFERENCE TO IEC 60068-2-3 TEST Ca.

#### PERIPHERAL SETUP DIAGRAM:

- SAMPLE SIZE: 2 PCS
- SETUP PHOTO:



\*\*\*\*\*

NUMBER: TWNH00010385

TESTS CONDUCTED

2. HUMIDITY TEST

TEST CONDITION:

- NON OPERATION TEST
- NUMBER OF CYCLE: 1 CYCLE
- TEST CONDITION PER CYCLE:

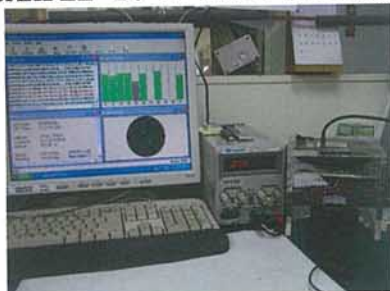
TEST STEP	TEMPERATURE (°C)	HUMIDITY (%RH)	DURATION (MINUTE)
1	25	50 TO 98	60
2	25 TO 55	98	165
3	55	98 TO 93	15
4	55	93	540
5	55	93 TO 98	15
6	55 TO 25	98	180
7	25	98	540

TEST PROCEDURE:

- CHECK THE SAMPLES' APPEARANCE BEFORE TEST.
- PUT THE SAMPLES INTO CHAMBER AND SET UP TESTING CONDITION.
- AFTER TESTING, TAKE OUT SAMPLES FROM CHAMBER AND PUT THEM IN THE STORAGE AREA.
- CHECK THE TEMPERATURE RECORD.
- OBSERVE THE SAMPLES AND RECORD FOR ANY VISIBLE CHANGE AFTER TESTING.

SUMMARY:

- NO VISIBLE DAMAGE WAS FOUND AFTER THE TEST.
  - FUNCTIONAL ELECTRICAL TEST IS PERFORMED BY THE APPLICANT AND CONSIDERED NORMAL ACCORDING TO THE APPLICANT'S REQUEST.
- SAMPLE 1: L TYPE ANTENNA:



\*\*\*\*\*



NUMBER: TWNH00010385

## TESTS CONDUCTED

### 2. HUMIDITY TEST

SAMPLE 2: M TYPE ANTENNA:



### -TEST PROFILE:





NUMBER: TWNH00010385

## TESTS CONDUCTED

### 3. LOW TEMPERATURE TEST

**TESTED SAMPLE:** SAMPLE 1 AND SAMPLE 2

SAMPLE NO	ITEM NO
1	L TYPE
2	M TYPE

### TEST EQUIPMENT:

EQUIPMENT : TEMPERATURE TEST CHAMBER  
MANUFACTURER : KSON  
MODEL NUMBER : THS-D4S-100  
DATE OF CALIBRATION : JAN. 21, 2008

### LABORATORY AMBIANCE CONDITION:

TEMPERATURE : 18~28 °C  
HUMIDITY : 20~80 %RH

### REFERENCE DOCUMENT:

-THE TEST WAS PERFORMED WITH REFERENCE TO IEC 60068-2-1 TEST A.

### PERIPHERAL SETUP DIAGRAM:

- SAMPLE SIZE: 2 PCS
- SETUP PHOTO:



\*\*\*\*\*

NUMBER: TWNH00010385

## TESTS CONDUCTED

### 3. LOW TEMPERATURE TEST

#### TEST CONDITION:

- NON OPERATION TEST
- NUMBER OF CYCLE: 1 CYCLE
- TEST CONDITION PER CYCLE:

TEST STEP	TEMPERATURE(°C)	DURATION(MINUTE)
1	25 TO -40	65
2	-40	120
3	-40 TO 50	90
4	50	30
5	50 TO 25	25

#### TEST PROCEDURE:

- CHECK THE SAMPLES' APPEARANCE BEFORE TEST.
- PUT THE SMAPLES INTO CHAMBER AND SET UP TESTING CONDITION.
- AFTER TESTING, TAKE OUT SAMPLES FROM CHAMBER AND PUT THEM IN THE STORAGE AREA.
- CHECK THE TEMPERATURE RECORD.
- OBSERVE THE SAMPLES AND RECORD FOR ANY VISIBLE CHANGE AFTER TESTING.

#### SUMMARY:

- NO VISIBLE DAMAGE WAS FOUND AFTER THE TEST.
- FUNCTIONAL ELECTRICAL TEST IS PERFORMED BY THE APPLICANT AND CONSIDERED NORMAL ACCORDING TO THE APPLICANT'S REQUEST.

SAMPLE 1: L TYPE ANTENNA:



\*\*\*\*\*

NUMBER: TWNH00010385

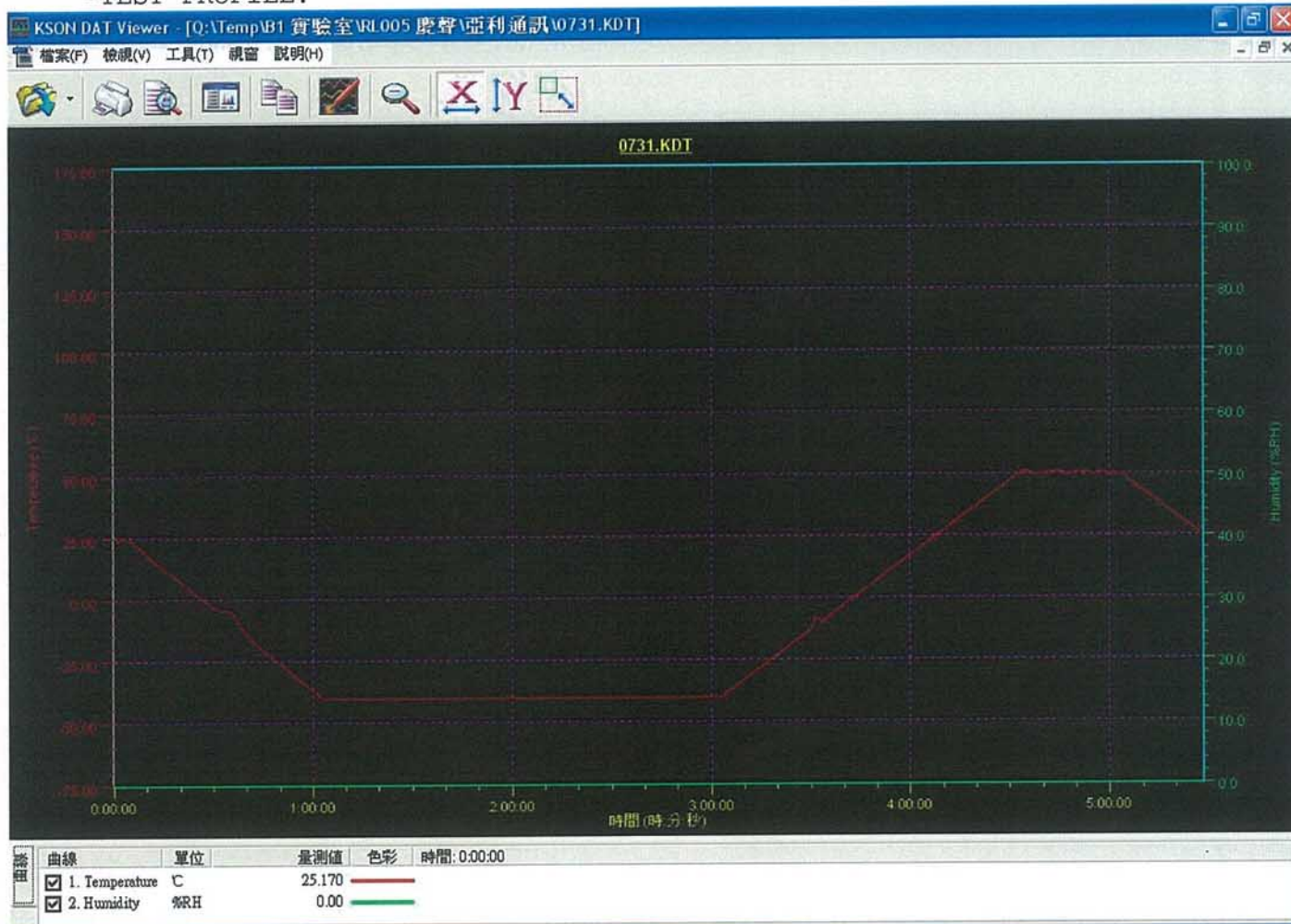
## TESTS CONDUCTED

### 3. LOW TEMPERATURE TEST

SAMPLE 2: M TYPE ANTENNA:



-TEST PROFILE:





NUMBER: TWNH00010385

## TESTS CONDUCTED

### 4. HUMIDITY TEST

#### TESTED SAMPLE :

SAMPLE NO	ITEM NO
1	L TYPE
2	M TYPE

#### TEST EQUIPMENT:

EQUIPMENT : TEMPERATURE & HUMIDITY CHAMBER  
MANUFACTURER : KSON  
MODEL NUMBER : THS-D4S-100  
DATE OF CALIBRATION : JAN. 21, 2008

#### LABORATORY AMBIANCE CONDITION:

TEMPERATURE : 18~28 °C  
HUMIDITY : 20~80 %RH

#### REFERENCE DOCUMENT:

-THE TEST WAS PERFORMED WITH REFERENCE TO IEC 60068-2-3 TEST Ca.

#### PERIPHERAL SETUP DIAGRAM:

- SAMPLE SIZE: 2 PCS
- SETUP PHOTO:



\*\*\*\*\*

NUMBER: TWNH00010385

## TESTS CONDUCTED

### 4. HUMIDITY TEST

#### TEST CONDITION:

- NON OPERATION TEST
- NUMBER OF CYCLE: 1 CYCLE
- TEST CONDITION PER CYCLE:

TEST STEP	TEMPERATURE (°C)	HUMIDITY (%RH)	DURATION (MINUTE)
1	25	50 TO 98	60
2	25 TO 55	98	165
3	55	98 TO 93	15
4	55	93	540
5	55	93 TO 98	15
6	55 TO 25	98	180
7	25	98	540

#### TEST PROCEDURE:

- CHECK THE SAMPLES' APPEARANCE BEFORE TEST.
- PUT THE SAMPLES INTO CHAMBER AND SET UP TESTING CONDITION.
- AFTER TESTING, TAKE OUT SAMPLES FROM CHAMBER AND PUT THEM IN THE STORAGE AREA.
- CHECK THE TEMPERATURE RECORD.
- OBSERVE THE SAMPLES AND RECORD FOR ANY VISIBLE CHANGE AFTER TESTING.

#### SUMMARY:

- NO VISIBLE DAMAGE WAS FOUND AFTER THE TEST.
  - FUNCTIONAL ELECTRICAL TEST IS PERFORMED BY THE APPLICANT AND CONSIDERED NORMAL ACCORDING TO THE APPLICANT'S REQUEST.
- SAMPLE 1: L TYPE ANTENNA:



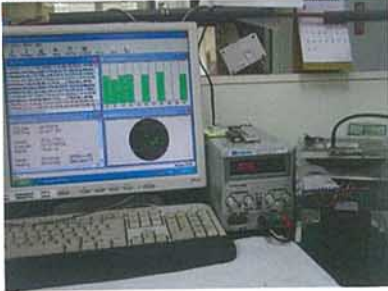
\*\*\*\*\*

NUMBER: TWNH00010385

TESTS CONDUCTED

4. HUMIDITY TEST

SAMPLE 1: L TYPE ANTENNA:



-TEST PROFILE:



END OF REPORT